

Auto-PERCIST™

A PET Image Volume Viewer with
Integrated PERCIST-based
Computer Assisted Analysis

Instructions for Download

Version 0.6 (beta release)

April 14, 2014

© 2014 The Johns Hopkins University

1 WELCOME

This manual describes how to download *Auto-PERCIST™*, a PET Image Volume Viewer with Integrated PERCIST-based Computer Assisted Analysis.

Auto-PERCIST™ is currently only available as a beta-release and is subject to frequent changes, therefore while every effort has been made to keep this documentation as current as possible, the actual version of the program which has been distributed to you may be more current than the description provided in this document. If you should encounter such a discrepancy, please don't hesitate to contact the authors with your comments or questions at iratlab@jhmi.edu.

We appreciate your willingness to beta-test *Auto-PERCIST™* and welcome any and all feedback with respect to your experience using *Auto-PERCIST™*, from issues related to installation and/or documentation, to usage or feature requests. All comments should be directed to us via e-mail at iratlab@jhmi.edu.

These instructions detail the process by which you can log into our servers and locate the appropriate version of Auto-PERCIST™ for download.

2 DISCLAIMER

Auto-PERCIST™ is a beta-release product. The use of *Auto-PERCIST™* is intended for research purposes only, and the software is provided AS IS without any express or implied warranty. The Johns Hopkins University makes no warranty or representation about the suitability of the software for any reason.

The Johns Hopkins University shall not be liable for any direct, indirect, special or consequential damages resulting from the loss of use, or data, or projects arising out of or in conjunction with the use or performance of this software.

The Johns Hopkins University cannot provide support for this software.

It is expected that academic usage of this software will be acknowledged in publications. Questions with respect to support, installation, other types of usage and other aspects related to the software should be directed to the authors at iratlab@jhmi.edu.

3 CONTENTS

1	Welcome	2
2	Disclaimer.....	3
3	Contents.....	4
4	Pre-Requisites	5
4.1	Client Computer	5
4.2	SFTP Download client.....	5
4.3	FTP Address and User Account Credentials.....	5
4.4	WinSCP Session Configuration.....	5
4.5	First Connection	7
4.6	Server site navigation.....	7
4.7	Installation	11

4 PRE-REQUISITES

4.1 CLIENT COMPUTER

The *Auto-PERCIST™* program has been written in the Java™ programming language and, as such, can theoretically run on any computing platform for which a valid Java™ virtual machine exists. At this time we have only tested *Auto-PERCIST™* on the Microsoft Windows XP, Windows 7 and Windows 8 Pro platforms. Any feedback on your use of *Auto-PERCIST™* on alternative platforms would be most welcome.

Auto-PERCIST™ runs best when executed in a 64-bit operating environment. It will run on a 32-bit platform but will be constrained by the memory limitations imposed by a 32-bit Java™ virtual machine. In addition, much of the computationally intense code in *Auto-PERCIST™* is written to take advantage of a multi-core processor. The default operating mode of *Auto-PERCIST™* is to take advantage of any multi-processing abilities provided by the host processor, though this capability can be disabled by the user. For performance reasons we recommend you don't disable this feature unless you experience runtime errors associated with multi-threading.

4.2 SFTP DOWNLOAD CLIENT

In order to access our server, you will need an FTP client which is able to use the SFTP protocol (SFTP over port 22). We have found that, at least for Windows-platform computers, the simplest and cheapest (free!) software for SFTP file transfers is the 'WinSCP' package. It can be downloaded from a variety of shareware/freeware sites. The direct site for download is: <http://www.winscp.net>. From this home page, you can navigate to the appropriate download page to download the 'WinSCP' installer which is appropriate for your computer. After downloading the appropriate installer, run it to install 'WinSCP' on your computer.

4.3 FTP ADDRESS AND USER ACCOUNT CREDENTIALS

A single read-only user account has been created on the Auto-PERCIST™ server for downloading of the software. The address and credentials for access this account are as follows:

Host name: iratlab.rad.jhmi.edu (162.129.241.88)
 User name: apercist
 Password: betatest

4.4 WINSCP SESSION CONFIGURATION

If you have installed WinSCP using the default settings, upon launching the program for the first time you will be presented with a screen that look like Figure 4.1.

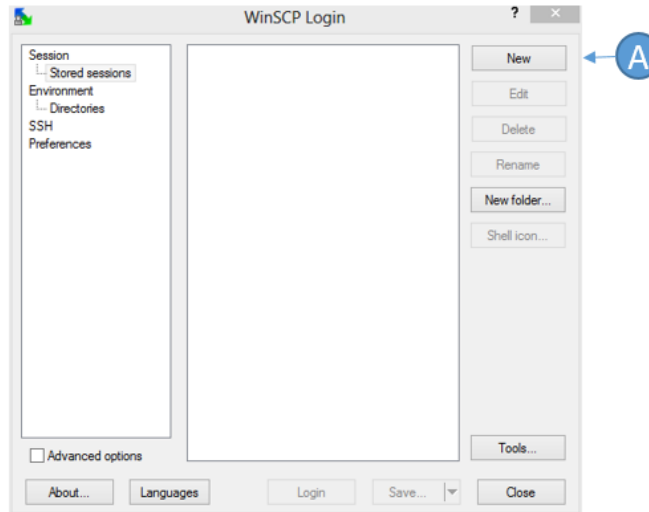


Figure 4-1 WinSCP Initial Startup Screen

To create a session for connecting to the Auto-PERCIST™ server, press the ‘New’ button (A). This will change the right side of the screen and allow you to enter the client settings provided in section 4.3 in order to create your session for connecting to the Auto-PERCIST™ server.

Except for the ‘File Protocol’ entry (A), and the ‘Port number’ (C), the other key fields will be empty.

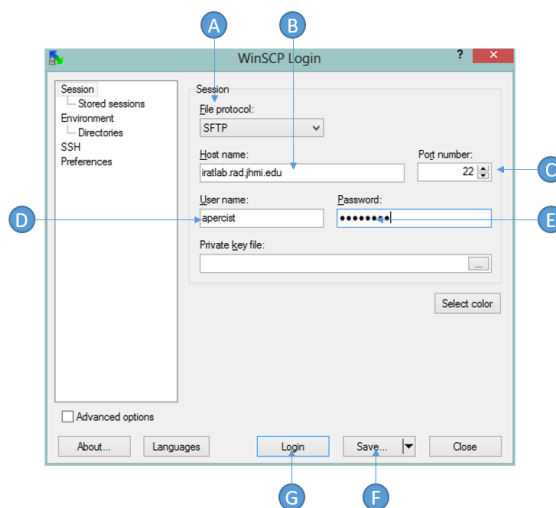


Figure 4-2 WinSCP Auto-PERCIST™ Session Configuration

Complete the ‘Host name’ (B), ‘User name’ (D) and ‘Password’ (E) fields using the information provided in section 4.3 above. Once you have configured the session, click ‘Save’ (F) if you wish to store this information for simple access in the future, otherwise you can click ‘Login’ (G) if you just wish to connect directly without saving the connection configuration. If you decide to ‘Save’ the configuration, you will

be given a default name and the option of whether you should save the password or not. The recommendation is to not save the password.

4.5 FIRST CONNECTION

The first time you attempt to connect with the server, you will be prompted with a 'Warning' dialog telling you that the 'Server's host key was not found in the cache.' This means that this is the first time you have attempted to connect with this server and that a secure communication has not yet been established. You can trust this host and continue the login procedure by clicking 'Yes'.

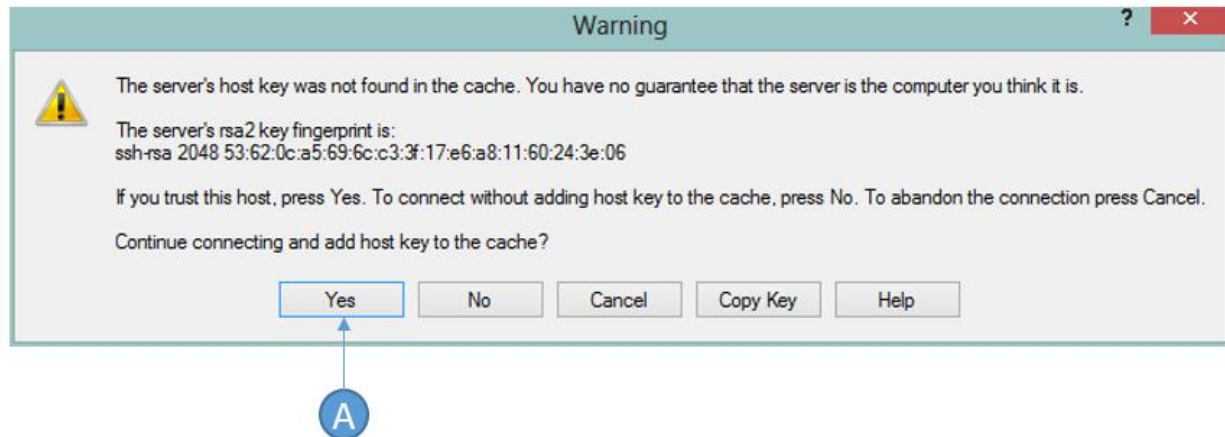


Figure 4-3 WinSCP Warning Host Key Missing

You will now login to the site and proceed to the main session window where you can select files for downloading to your system.

4.6 SERVER SITE NAVIGATION

The server site may differ somewhat from the description provided in this document, but the functionality should be similar. The left side of the screen lists the default directory on your system, whereas the right side of the screen lists the default directory of the Auto-PERCIST™ server. Figure 4-4 illustrates the typical presentation after a successful login.

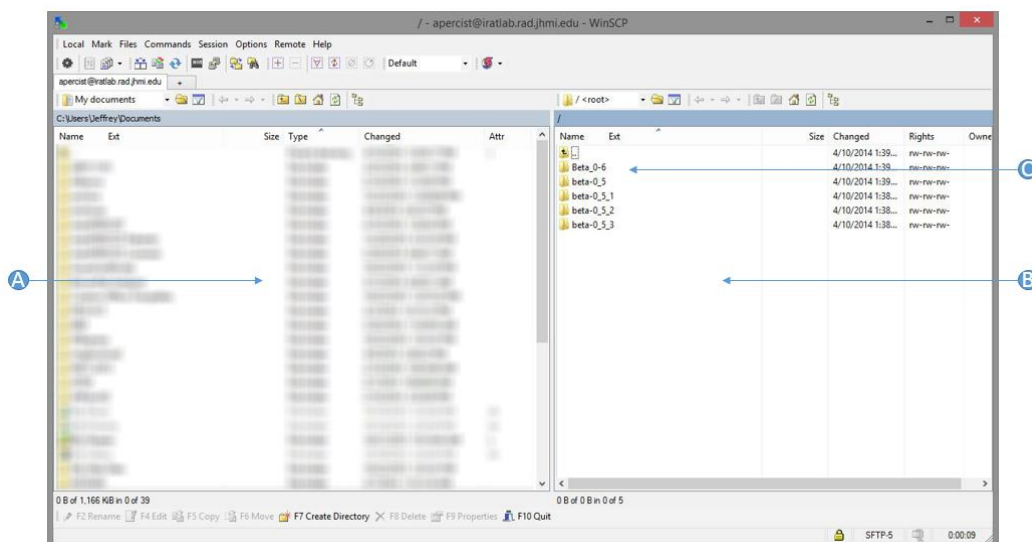


Figure 4-4 WinSCP Main Window after Login

Notice that the left panel (A) is a listing of the default directory on the user's computer to which any transferred files will be saved. The right panel (B) is the directory listing of the root directory on the server. The subdirectories are named by version release, you will want to choose the highest version for your download. You can enter the directory by double-clicking the folder name.

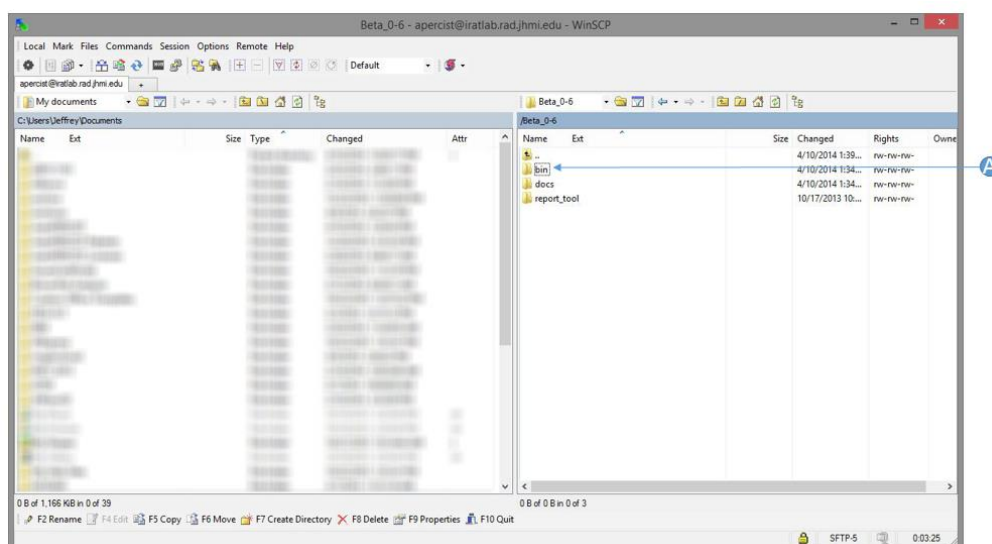


Figure 4-5 Specific Version Subdirectory

Once you have entered the subdirectory for the version you wish to download (Figure 4-5), you will see three directories: BIN, DOCS, and REPORT_TOOL. The subdirectory which contains the installation files for Auto-PERCIST™ are in the subdirectory named BIN (C). The DOCS folder contains this manual and the

user-documentation, which you may already have. The REPORT_TOOL folder contains a MS-Access database which can be used to generate summary reports of the exported results from Auto-PERCIST™. This is discussed further in the Auto-PERCIST™ user manual.

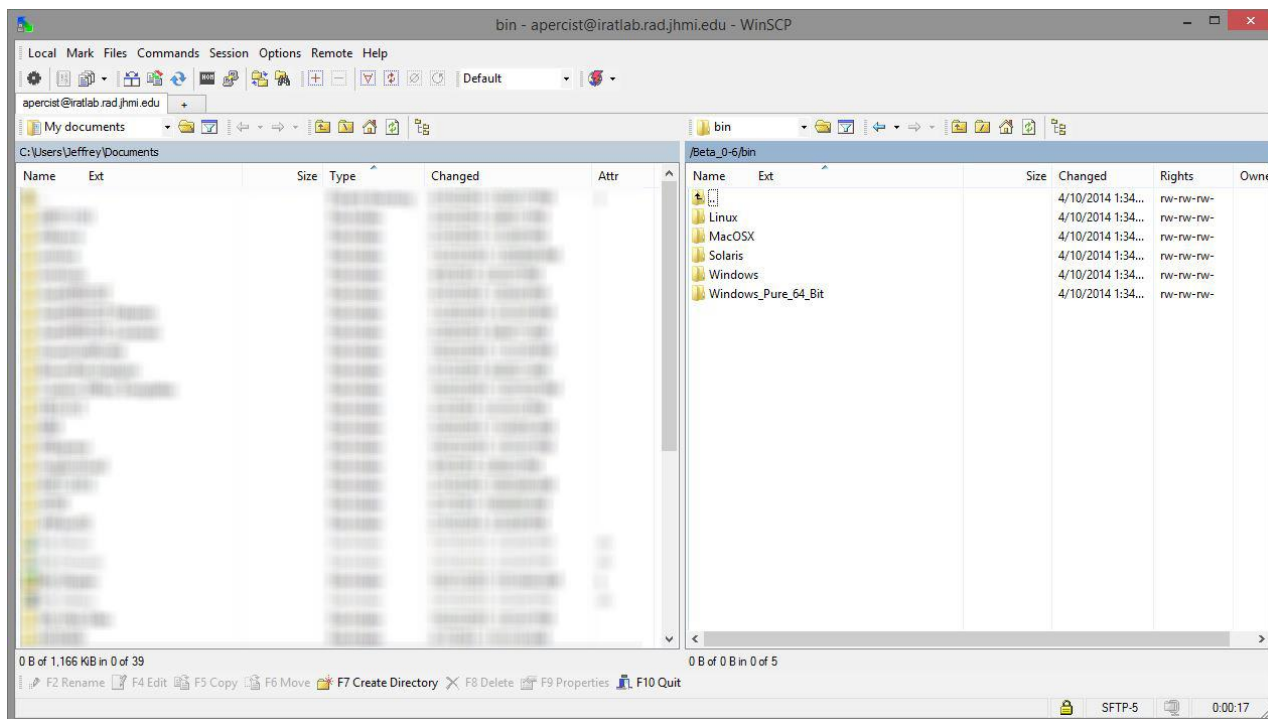


Figure 4-6 Available Platforms for Auto-PERCIST™

Once you've entered the appropriate subdirectory, you will find subdirectories containing the installers for each of the available platforms for which an Auto-PERCIST™ installer exists (Figure 4-6). As of this time, only the installers for 'Windows' and 'Linux' have been tested. Click on the subdirectory for the platform for which you want to download an Auto-PERCIST™ installer.

You will now find two subdirectories (Figure 4-7), one named 'NoVM' and one named 'VM'. This refers to whether or not an appropriate Java™ Virtual Machine (VM) is pre-packaged into the installer. If you are not sure whether a compatible VM exists on your computer system, select the installer with the pre-packaged VM (A).

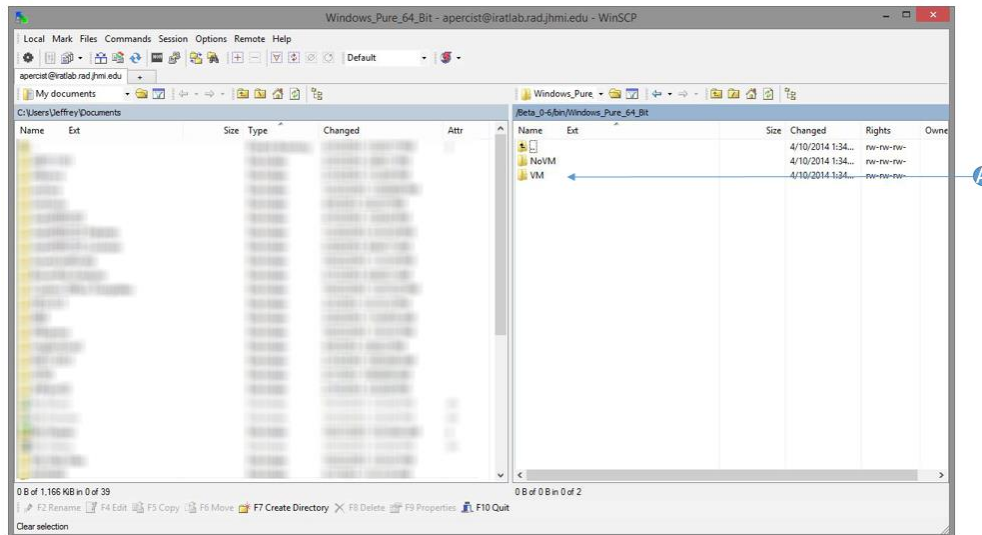


Figure 4-7 Auto-PERCIST™ Installer Type Selection

You now have access to the Auto-PERCIST™ installer appropriate for your computer platform and virtual machine needs. You can select the 'install.exe' file (Figure 4-8, (A)) and then transfer it to your computer by selecting the copy button (B) on the bottom of the screen, or just pressing the 'F5' key on the keyboard. This will start the transfer of the file to the directory on your computer identified on the left side of the screen (C). The program will ask you to confirm the transfer and, after answering in the affirmative, will perform the file transfer. Once the transfer is complete, press the 'F10' key or 'Quit' button (D) on the bottom of the screen.

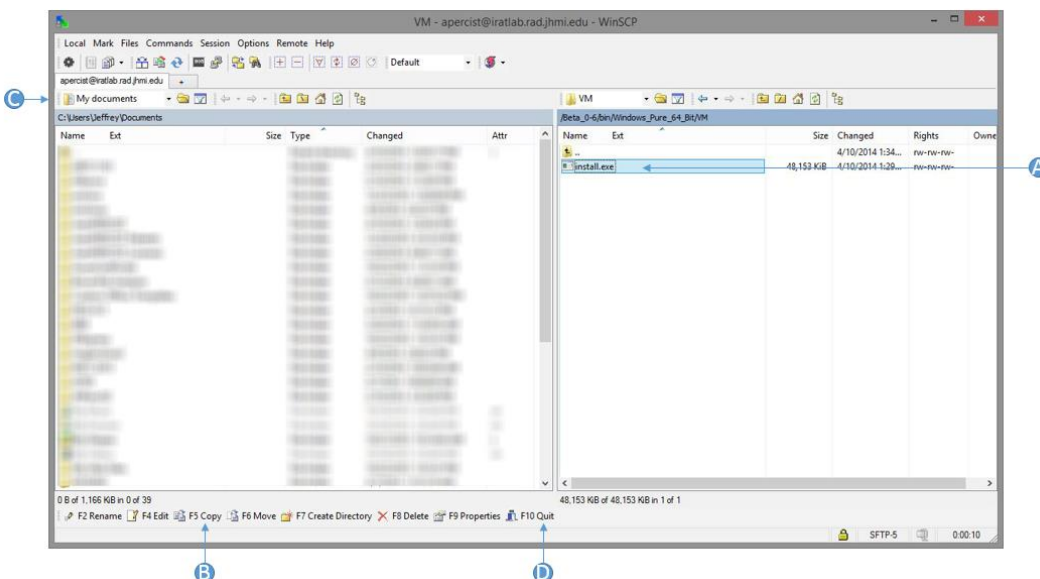


Figure 4-8 Auto-PERCIST™ Installer Download

4.7 INSTALLATION

Remember the file name 'install.exe' and the location in which this file was saved. You will now want to reference the 'Auto-PERCIST™ Instructions and Usage' manual (available on the Auto-PERCIST™ server within the DOCS directory) for guidance on the installation and usage of Auto-PERCIST™.